

Front Door for Research

UCLA Health IT

Research Informatics and Technology

Ibraheem Ali, PhD

Overview Page



UCLA Health

Information Technology

About ▾

Services

Support ▾

Resources ▾

News and Events

WELCOME TO THE UCLA HEALTH COMMUNITY!

This is your one-stop-shop for all IT services dedicated to supporting your research.



We understand your work is important and we want to make sure you can find everything you need in one centralized place. So, we've created this one-stop-shop for services we believe you commonly use.

Categories of Major Services Offered



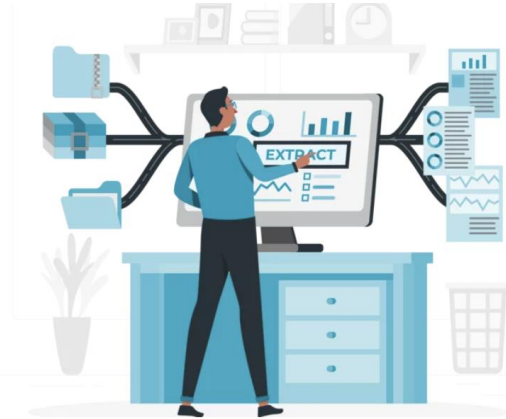
Services to facilitate your research



Computation, Storage, Software

Services for High-Performance Computing (HPC), servers, cloud computing, data storage, and obtaining software.

[Learn more](#)



Data Access and Collection

A range of services related to gaining access to datasets, cohort discovery, capturing and exploring data.

[Learn more](#)



Study Activation and Development

Platforms and services involved in the process of activating and developing studies and clinical trials.

[Learn more](#)

Additional Resources on Overview Page



Resources

These include services such as core research facilities for data collection, audiovisual support, UCLA Library Resources, data management planning tools, animal resource management and more.

Account Transfer	▼	Local Presentation Support	▼
Conference Room Booking	▼	New IT Project Request Intake Form	▼
CTSI Researcher Resources	▼	Onboarding Reminders	▼
Data Management Planning Tool	▼	UCLA Biomedical Library Key Resources	▼

Resource Facilities

Core Services	▼
Division of Laboratory Animal Medicine (DLAM)	▼

Training and Consultations



Training

A collection of UCLA data services providers that offer workshops, trainings, webinars or consultations that support research.


[Bioinformatics Training](#) 

[Biostatistical Consults](#) 


[Data Management Consultation](#) 

[Citation Management](#) 

[Environmental Health & Safety](#) 


[NIH Data Management and Sharing Guidelines](#) 

[Research Workshops Portal](#) 

[Research Tech Talk Recordings](#) 

[Statistics Webinar](#) 

[UCLA Health Data Day Recordings](#) 

[ULEAD Training and Support](#) 

Bookmark This Page

<https://uclahs.fyi/researcher-resources>



Questions

Contact UCLA Health IT Research Informatics Team

<https://uclahs.fyi/DGITresearchcontact>